



# ArtisanEdge™

## Remodeler General Liability

The fastest portal in the market now provides a customized product designed to cover contractors specializing in remodeling projects. Use ArtisanEdge to obtain real-time, bindable quotes to protect your remodeling contractors.

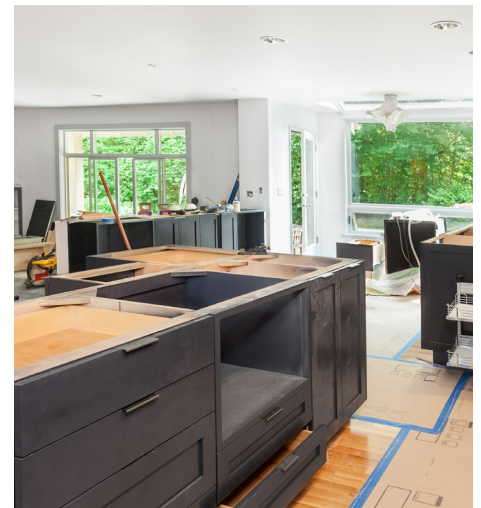
### Remodeler General Liability Product Highlights

- Minimum premiums starting at \$600
- Commercial and residential exposures accepted
- Structural work allowed
- Contractor personal property available
- Limits of \$1,000,000 / \$2,000,000 / \$2,000,000 available
- Excess limits up to \$5,000,000 available
- Available in 45 states
- AM Best A++ XV rated paper\*

\*as of 12/17

### ArtisanEdge Benefits

- Fastest insurance portal in the industry
- Turnaround times of five minutes or less
- Convenient billing options
- Instant policy issuance
- Products tailored to the artisan contractor community



## Contact us

855-733-9500  
ArtisanEdge@tmhcc.com  
www.ArtisanEdge.com

### Office Locations

Sacramento	Columbus
San Diego	Atlanta
Chicago	Houston

Not all coverages or products may be available in all jurisdictions. The description of coverage on this page is for information purposes only. Actual coverages will vary based on local law requirements and the terms and conditions of the policy issued. The information described herein does not amend, or otherwise affect, the terms and conditions of any insurance policy issued by HCC Casualty Insurance Services, Inc. In the event that a policy is inconsistent with the information described herein, the language of the policy will take precedence.

A member of the Tokio Marine HCC group of companies

**Mind over risk**